

ICOM INSTRUCTIONS

CLONING SOFTWARE CS-A220

- This cloning software is designed to perform data entry, settings, and cloning for the IC-A220 VHF AIR BAND TRANSCEIVER.
- The CS-A220 has a Help file to describe functions and operations.
- The instructions are based on using Microsoft® Windows® 7.

■ System requirements

The following PC and cable are required to use the CS-A220.

PC

- Microsoft® Windows® 8.1 (32/64 bit)*
- Microsoft® Windows® 8 (32/64 bit)*
- *Except for "RT" versions of Microsoft® Windows® 8.1 or Microsoft® Windows® 8.
- Microsoft® Windows® 7 (32/64 bit)
- Microsoft® Windows Vista® (32 bit)
- RS-232C port
- CD drive

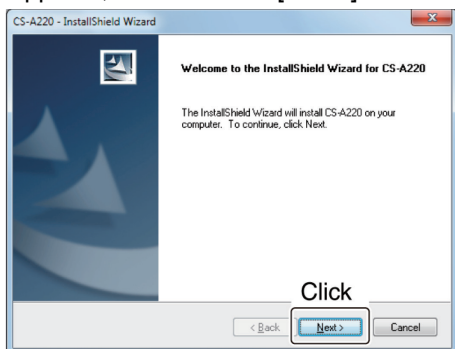
Cable (Purchase separately)

- OPC-1529R Programming Cable

■ Software installation

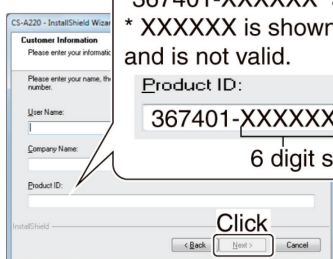
When installing the software, log in as the **administrator**.

1. Make sure Windows has completed its startup, and no other applications are running.
2. Insert the CD into a CD drive.
3. Double-click "setup.exe" contained in the CD.
 - If "User Account Control" appears, click [Yes] to continue.
4. "Welcome to the InstallShield Wizard for CS-A220" appears, and then click [Next>].

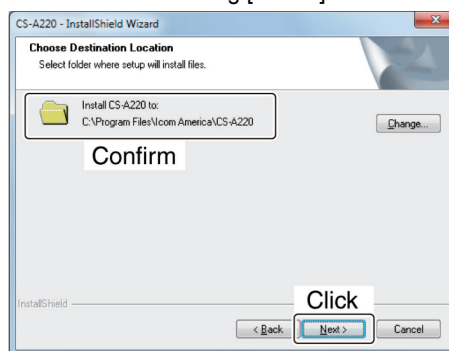


5. "User Information" appears. Type your name, your company name, and the product ID number in the following manner, and then click [Next >].
 - Product ID number: 367401-(6 digit serial number)
 - Please check the serial number on the CD. If you downloaded the software, enter the ID provided by your dealer.

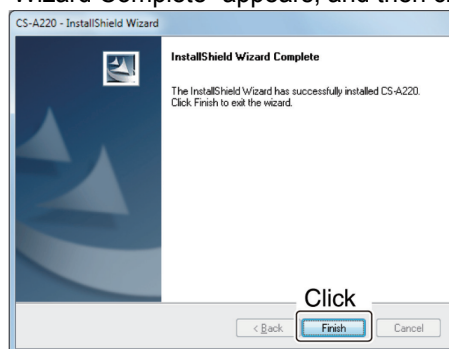
Example:
When the serial number is XXXXXX*, enter "367401-XXXXXX" as the ID number.
* XXXXXX is shown as an example only, and is not valid.



6. "Choose Destination Location" appears, and then click [Next>].
 - If desired, click [Browse...] to select another destination folder before clicking [Next >].



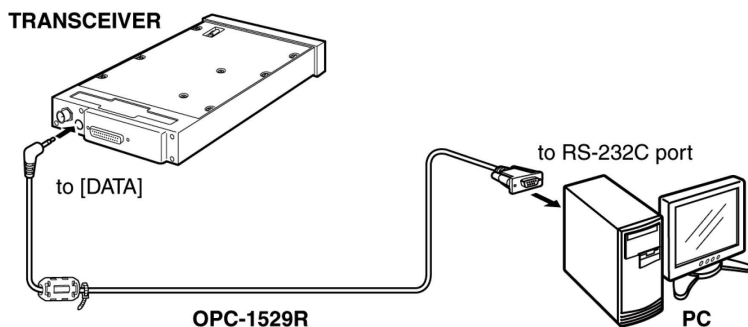
7. "Ready to Install the Program" appears, and then click [Install].
8. After the installation is completed, "InstallShield Wizard Complete" appears, and then click [Finish].



9. Eject the CD.
10. A program group 'CS-A220' appears on the program menu, and a shortcut icon appears on the desktop.
 - You can uninstall the cloning software using "Uninstall a program" in the Windows Control Panel.

■ Connection

1. Rotate [VOL] counter clockwise to turn OFF the transceiver.
2. Connect the OPC-1529R cable as illustrated below.
 - Do not connect the GPS receiver to the transceiver.
3. Rotate [VOL] clockwise to turn ON the transceiver.

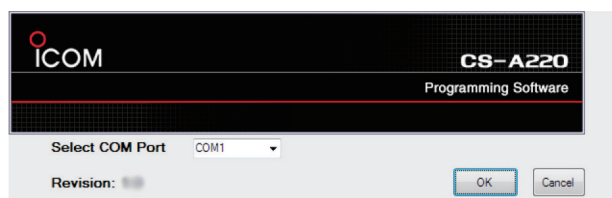


■ Setup Screen

When you start up the cloning software, the setup screen will appear as shown below.
Select the correct COM port number from the dropdown list.


Click [OK] to open the application screen.

Click [Cancel] if you want to close the application.



■ Programming information

- To prevent data loss, you should first read (download) all the transceiver's data before entering or editing parameters using the cloning software, even when the transceiver is factory fresh.

Click , or [Clone] in the top menu of the cloning software, and then select "Read <- TR" to start downloading.

- While reading or writing cloning data, **NEVER** turn OFF the transceiver or the PC, and **NEVER** disconnect the cable. Otherwise, the data could be lost or corrupted.
- Before editing or entering, make a backup file onto your PC.
A backup file allows easy restoring if the setting data in the transceiver is accidentally deleted.
- After writing the cloning data, turn OFF the transceiver to exit the cloning mode.

Please refer to the cloning software's Help file for assistance with the functions or settings.

To open the Help file, click [Help] in the top menu of the cloning software and select "Contents," or simply push the [F1] key on the PC's keyboard.

Icom, Icom Inc. and Icom logo are registered trademarks of Icom Incorporated (Japan) in Japan, the United States, the United Kingdom, Germany, France, Spain, Russia, Australia, New Zealand, and/or other countries.

Microsoft, Windows, and Windows Vista are registered trademarks of Microsoft Corporation in the United States and/or other countries.

All other products or brands are registered trademarks or trademarks of their respective holders.